



RICH BENCI

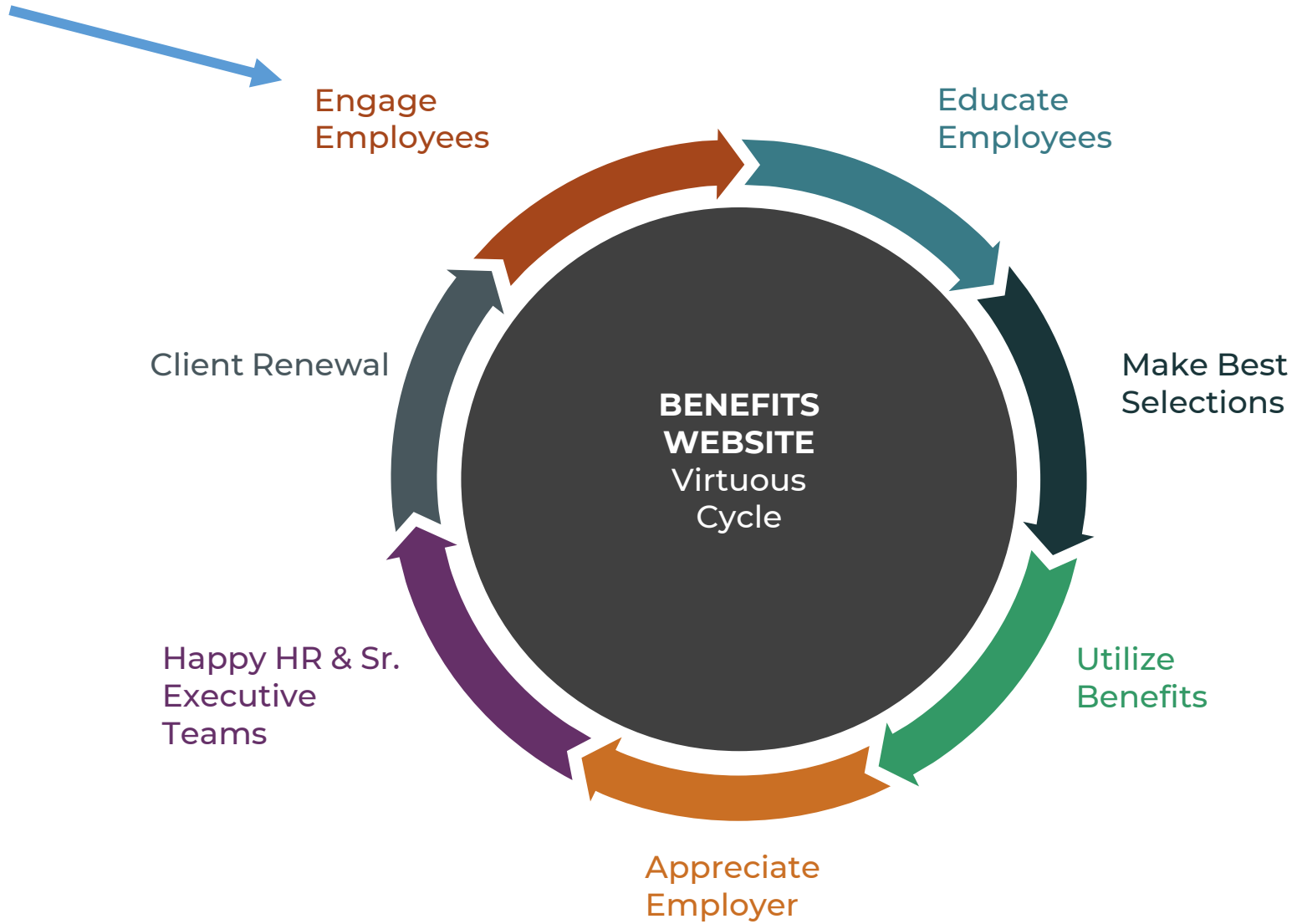
TEL 760-415-7046

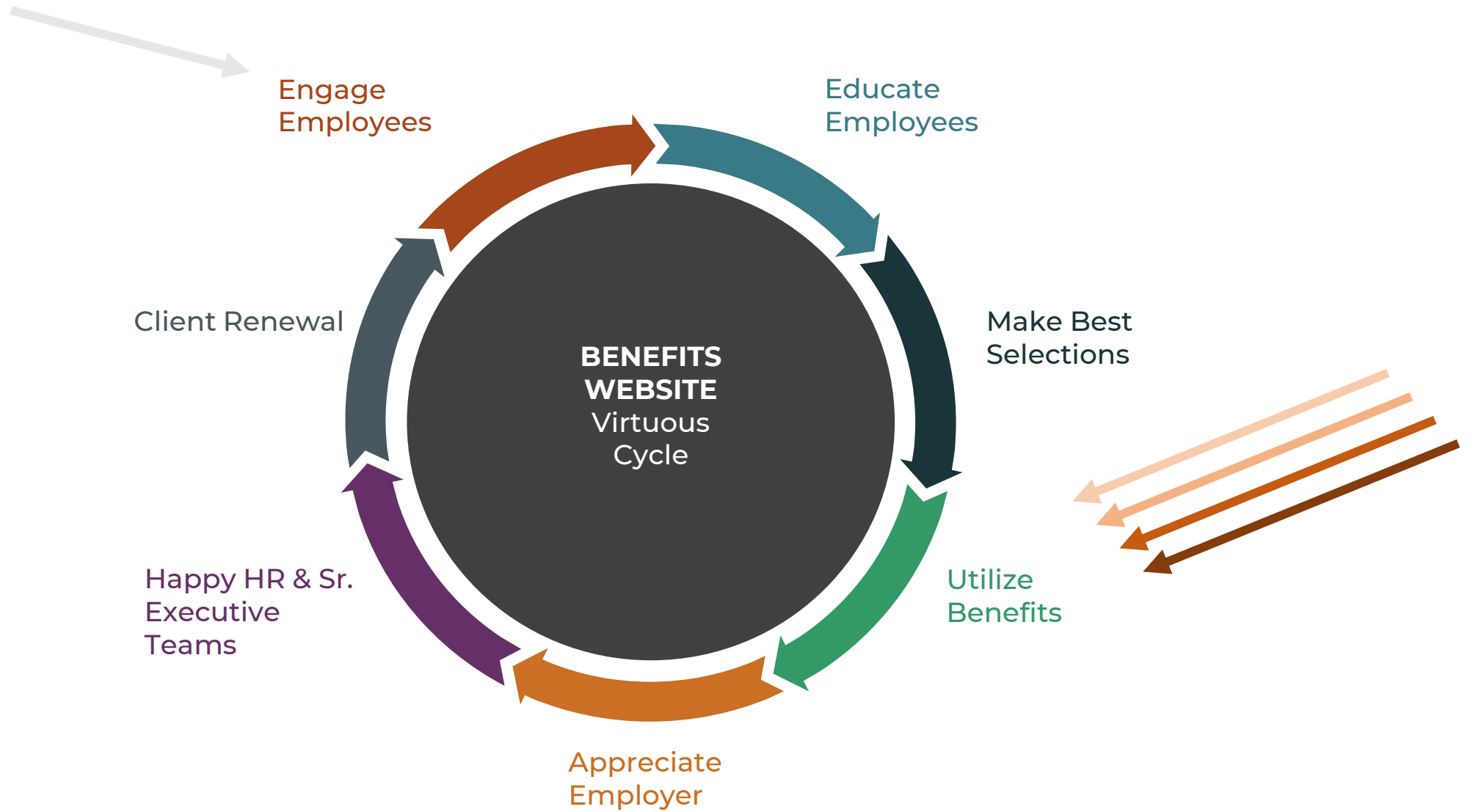
EMAIL RichB@OmegaBenefits.Net

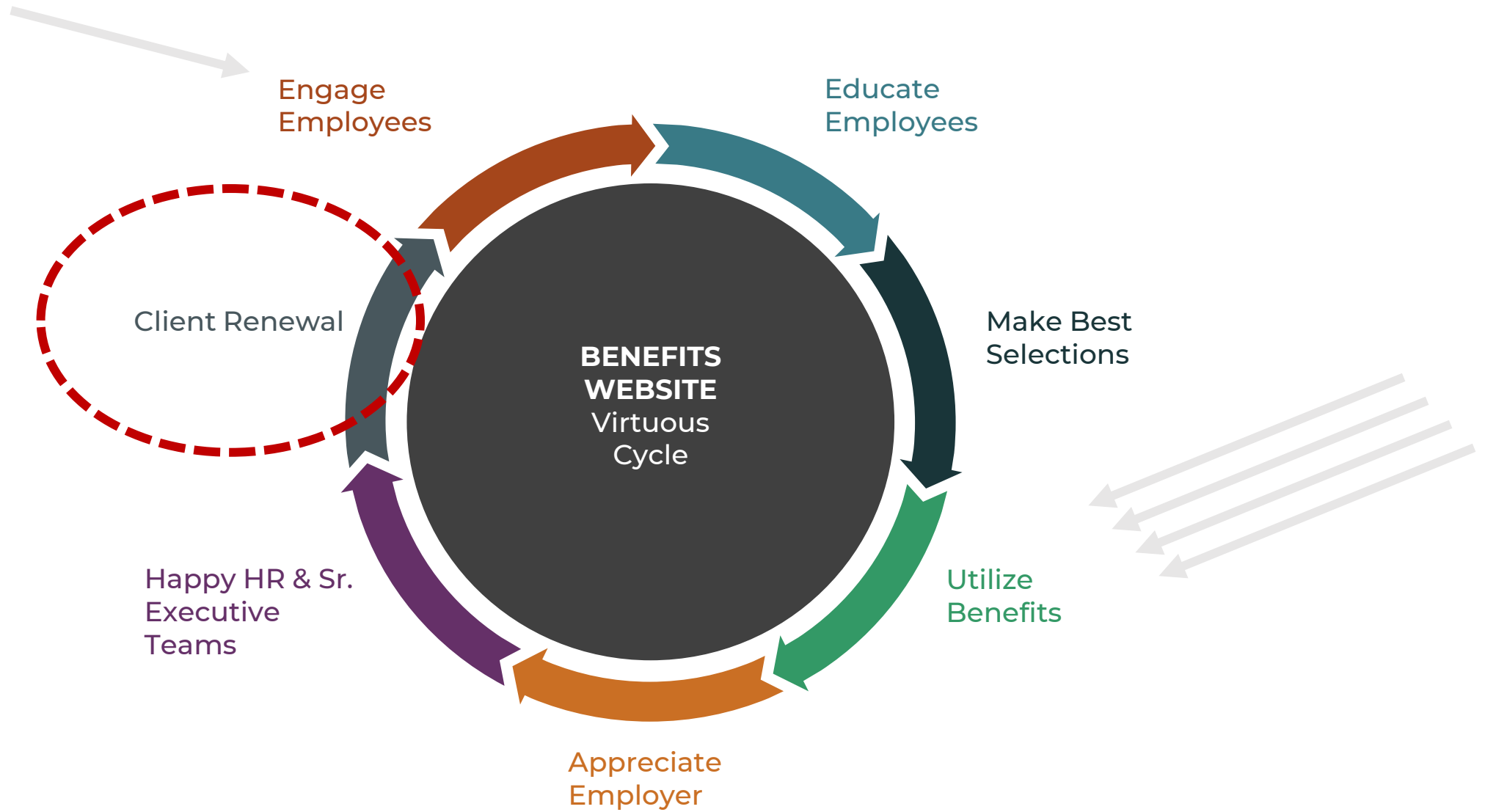
WEB OmegaBenefits.Net

Benefit Websites:

*Full-featured, Affordable,
Fast turnaround, Happy clients*







Client Size:

73 – 22,000 EEs

Vast majority are between
100 – 5,000 EEs

USI Client Median:
1,200 EEs

Across all industries

Education

Entertainment

Healthcare

Industrial

Manufacturing

Marketing

Municipalities

Non-profit

Professional Services

Religious

Retail

Technology



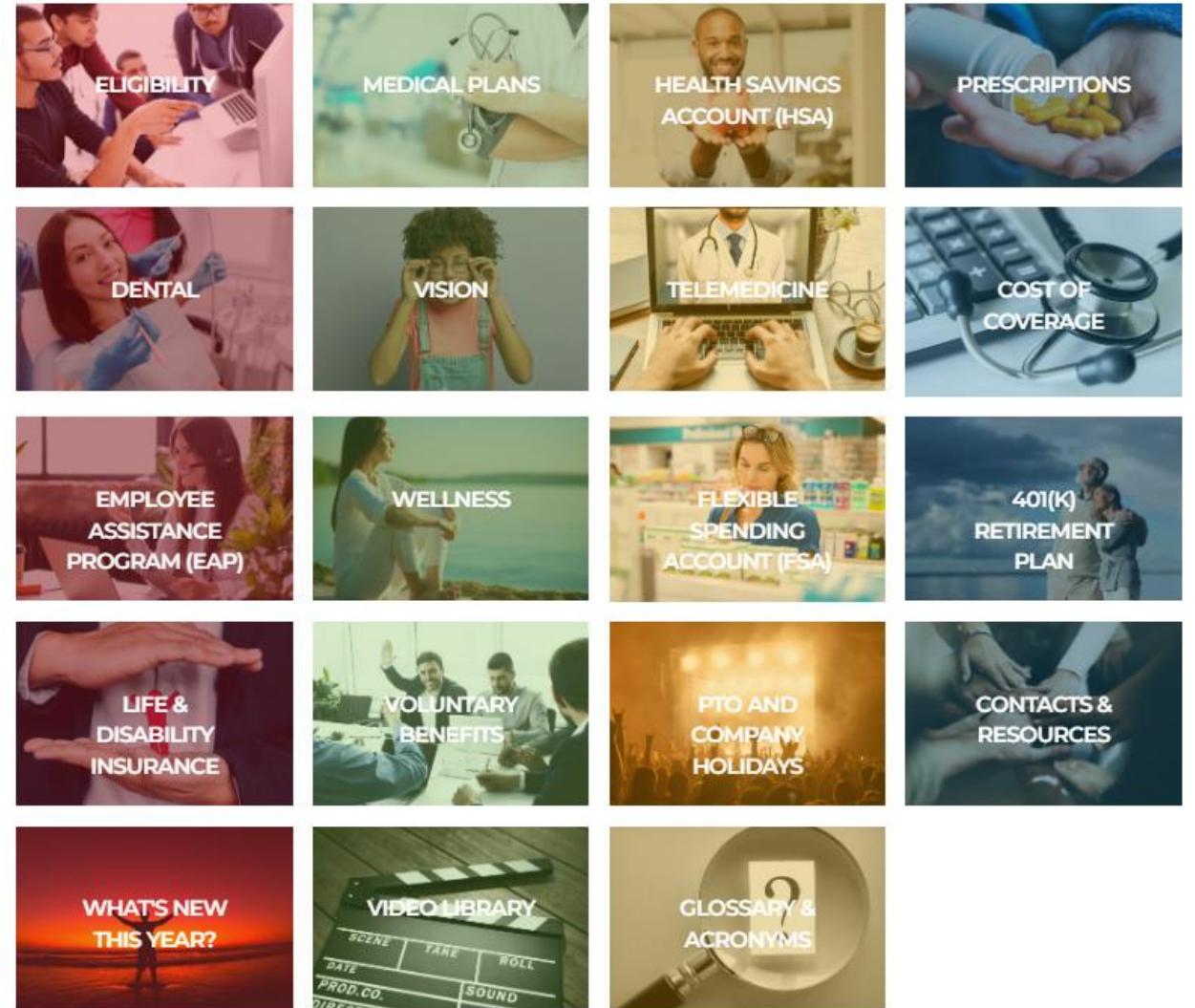
Full Featured

- Single source of truth
- Fully responsive (mobile to desktop)
- Accommodates multiple learning styles
- Customized to each client's needs
- Charts, Documents, Videos, Links
- Employees can self-serve
 - Reduce calls/messages into HR

USI Demo Site:

<https://acmeusi.myben.site/>

Your Benefits at a Glance



Enroll Now

Let's Start! -->



Process

4-Week production time

- Not all information is available Day 1
- Iterative Process:
 - Style & Structure
 - Content
 - Documents

Omega works closely with USI account team and client HR team throughout the production process.

Select the Content Sections relevant for this client.

For a Benefits Website example, click here: <https://demo.eebenefits.net>

Any item with a checkbox is an optional item, and will only be included if selected.

(BOLD elements are the navigation menu items that appear on Top Nav bar and Home Page tiles)

Home

Welcome Message

Eligibility

Open Enrollment

New Hire

Qualifying Event

Other Eligibility section:

Health Plans

Medical

Health Savings Account

Prescriptions

Dental

Vision

Hearing

Telemedicine

Cost of Coverage

Other Health & Wellness section:

Other Health & Wellness section:



Process (continued)

1) Logo and Color style guide

2) Most recent Benefits Guide

3) Carrier Docs, Flyers, Brochures

- upload to a Sharefile Folder
- please organize sub-folders by benefit
- name each document as you want the Employee to see the title

4) Comparison Charts (for Medical Plans, Rx, Dental, Vision, Cost of Coverage Contributions, etc.)

- EDITABLE versions of these charts (from **BenefitsPoint as a MS Word Table**)
- having an EDITABLE version (not a JPEG or PNG image or PDF) is super helpful
- allows us to create interactive comparison charts that are really valuable to the employee

5) Contact Chart in Excel

- four columns is typical: Benefit; Service Provider; Phone; Website/Email

COLORS					
PRIMARY	PRIMARY	SECONDARY	SECONDARY	TERTIARY	BODY TEXT
					
Detroit PANTONE 541 C CMYK 100, 78, 32, 22 HEX #0E406A RGB 14, 64, 106	Chicago PANTONE 542 C CMYK 51, 21, 6, 0 HEX #7AADD3 RGB 122, 173, 211	Jax CMYK 5, 20, 40, 20 HEX #C6A985 RGB 198, 169, 133	Zen CMYK 7, 12, 20, 0 HEX #EAD8C9 RGB 234, 219, 201	Vanilla CMYK 2, 3, 5, 0 HEX #F8F2EC RGB 248, 242, 236	Sparrow CMYK 19, 17, 10, 81 HEX #444349 RGB 68, 67, 73



Affordable:

Includes a 20% discounted price for USI clients.

\$3,500 1-year license

- Renewal in 2025 will be at then-current annual license price.
- This covers a single EE group. For additional EE groups, see below.

\$1,500 Translation (per language)

- This is a reduced price for 2024!

\$1,500 per Additional Employee Group

- This allows for multiple EE groups on a single Benefits Site.
- All EEs can see all the different groups' benefits.

- **15-month license**
(Open Enrollment through entire Plan Year)
- **Omega manages all aspects of hosting, security and site maintenance**
- **Edits & Updates throughout the year**
- **Monthly Analytics**
- **No additional costs**



<https://usi-proposal-form.omegabenefits.net/>



Employee Benefit Websites for USI Clients

What it is:
Full-featured, Employee Benefits website, custom-configured for each individual USI client.

- ✓ Empowers EEs to make best benefits selections
- ✓ Available year-round with easy access for EE and spouse
- ✓ Reduces calls/emails to HR team as EEs self-help
- ✓ Saves USI team time -- Omega does the heavy lifting
- ✓ Includes hosting, maintenance, edits and updates
- ✓ Fully responsive on mobile, tablet & desktop
- ✓ Monthly Google Analytics reports



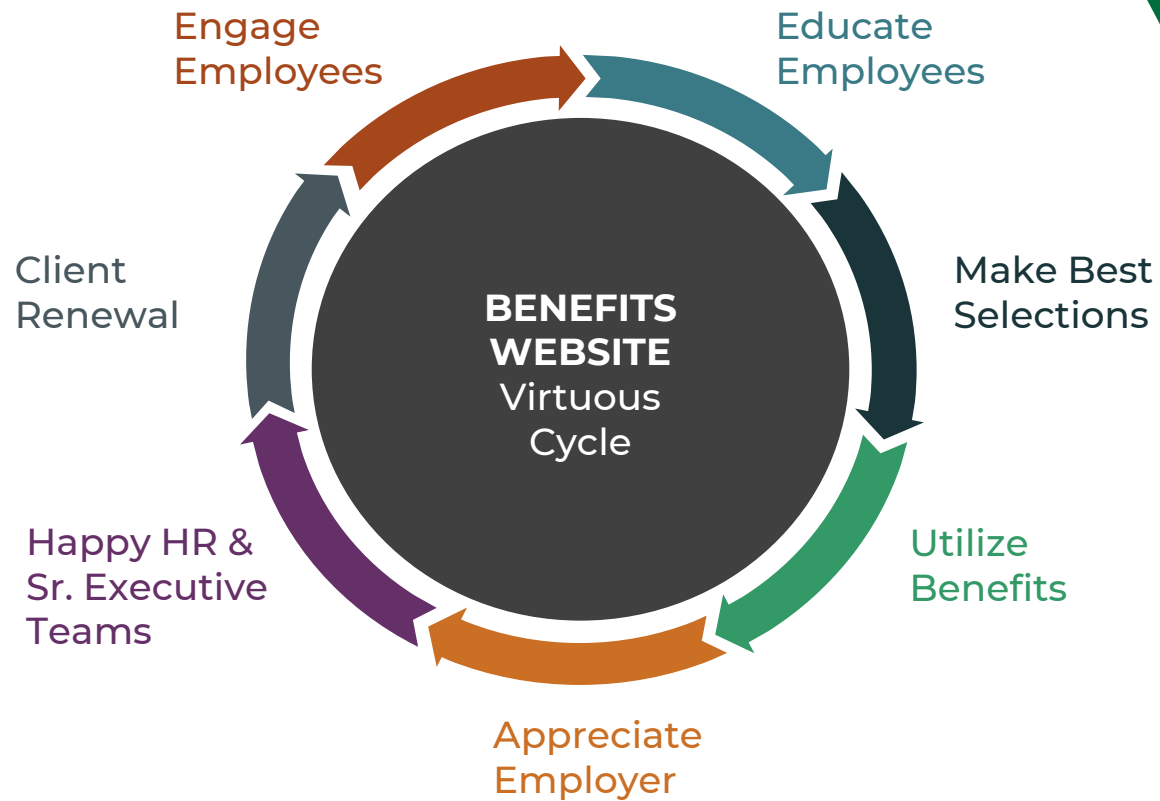
Benefits Site Overview
for Clients

Target: Clients with 150 – 5,000+ employees.

- ✓ Perfect for clients that are too big for ad-hoc communications, but too small to justify expensive, customized campaigns.
- ✓ Omega's clients range from 74 - 22,000 employees
- ✓ Corporate, Non-profit, Education, Municipalities, Religious
- ✓ All industries!



Omega Sites:



- Engages employees year-round
- Increases EE satisfaction & appreciation
- Improves retention and recruitment
- Reduces calls into HR team
- **Produces happy clients!**
- Saves account team time and costs





RICH BENCI

TEL 760-415-7046

EMAIL RichB@OmegaBenefits.Net

WEB OmegaBenefits.Net

Benefit Websites:

*Full-featured, Affordable,
Fast turnaround, Happy clients*